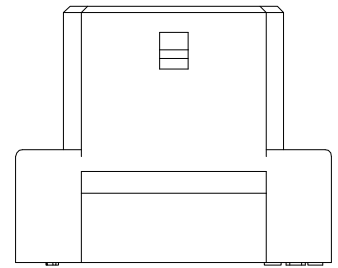
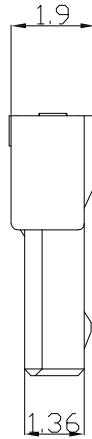
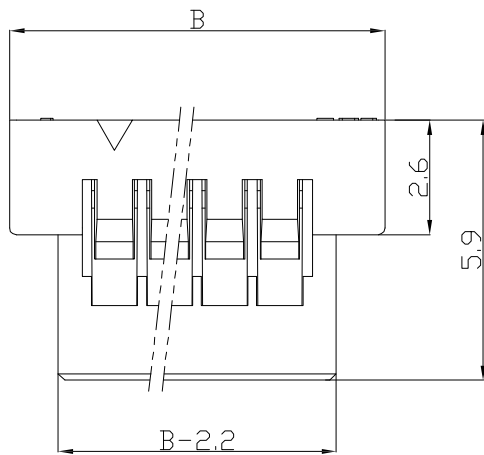


仅供参考

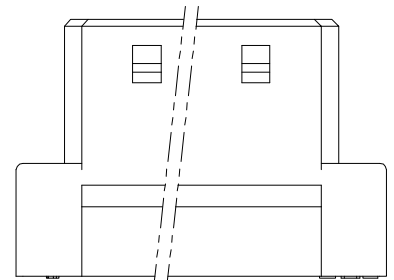
REV.	REVISION RECORD	DATE
A0	新图面发行	2017.06.16

主要技术参数 Main Specifications

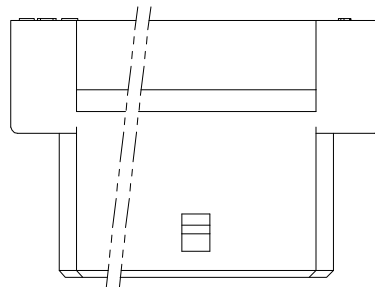
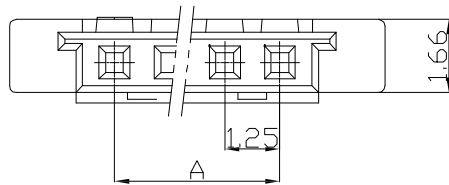
线 数 (Poles): 02 to 30
 接触电阻 (Contact resistance): $\leq 20m\Omega$
 绝缘电阻 (Insulation resistance): $\geq 100M\Omega$
 额定电压 (Rated voltage): 125 V AC DC
 额定电流 (Rated current): 1.0A AC DC
 耐 电 压 (Withstand Voltage): 500V AC/minute
 温度范围 (Temperature Range): $-25^{\circ}C \sim +85^{\circ}C$



2P~3P



4P~30P



4P~6P

单泡点为ST-WF-125-002YB

Poles	Dimensions mm	
	A	B
2	1.25	6.00
3	2.50	7.25
4	3.75	8.50
5	5.00	9.75
6	6.25	11.00
7	7.50	12.25
8	8.75	13.50
--	--	--
30	36.25	41.00

1	Housing 胶壳	PA66 (UL94V-0/V-2)	1	Black 黑色	
序号	图 号	名称	材 料	数量	附 注

	GENERAL TOLERANCES		SCALE: 1:1	NAME	DATE
	LINEAR	ANGLES	APPROVED		
	0.0 ± 0.30	X° REF ± 6°	DESIGNER		
	UNIT: MM	0.00 ± 0.20	X° ± 3°	DRAWN	肖坤权
SIZE: A4	0.000 ± 0.10	X° X' ± 2°			

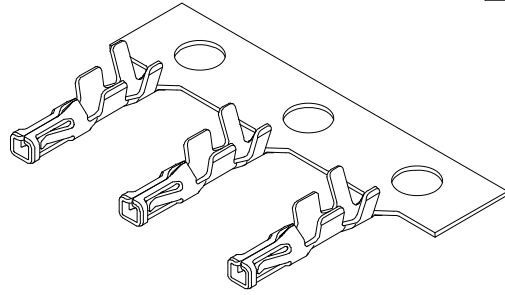
深圳市思拓展电子有限公司
 SHENZHEN SINOTOP ELECTRONICS CO., LTD
 公司网址: www.szstuo.cn 公司电话: 0755-23765350
 邮 箱: 2850175982@qq.com 公司传真: 0755-23765341

TITLE: 1.25mm PITCH HOUSING

PART. NO:	ST-WF-125-002Y
DWG. NO:	
REV:	A0
SHEET:	1/1

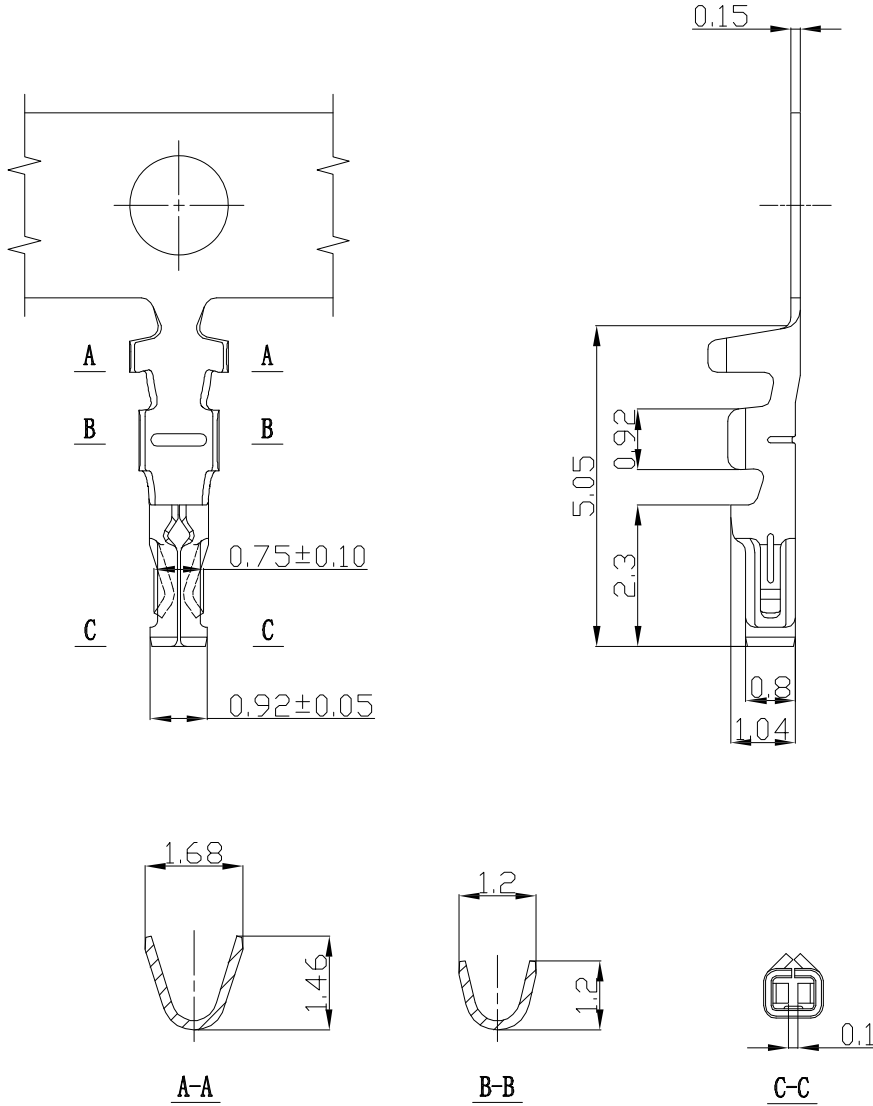
仅供参考

REV.	REVISION RECORD	DATE
A0	新图面发行	2017.06.16



主要技术参数
Main Specifications

线数 (poles): 2 to 30P
 额定电流 (Current rating): 1.0A AC, DC (AWG#2B)
 额定电压 (Voltage rating): 200V AC, DC
 温度范围 (Temperature range): -25°C to +85°C
 接触电阻 (Contact resistance): $\leq 40m\Omega$
 绝缘电阻 (Insulation resistance): $\geq 100M\Omega$
 耐电压 (Withstand voltage): 500V AC/minute
 适用线规 (Applicable wire): AWG #32 to #28



Wire Range	Insulation O. D.	Material	Finish	Qty/Reel
AWG #28~#32	1.00mm (max)	Phosphor bronze	Gold-plated	15000PCS/Reel (1盘)

	GENERAL TOLERANCES		SCALE: 1:1	NAME	DATE	深圳市思拓展电子有限公司 SHENZHEN SINOTOP ELECTRONICS CO., LTD 公司地址: www.szstuo.cn 公司电话: 0755-23765350 邮箱: 2850175982@qq.com 公司传真: 0755-23765341	PART. NO:	
	LINEAR	ANGLES	APPROVED				ST-WF-125-002T	
	0.0±0.30	X° REF±6°	DESIGNER				DWG. NO:	
	UNIT: MM	0.00±0.20	X° ±3°	DRAWN	肖坤权		2017.06.16	REV: A0 SHEET: 1/1
SIZE: A4	0.000±0.10	X° X'±2°				TITLE: 1.25mm PITCH TERMINAL		