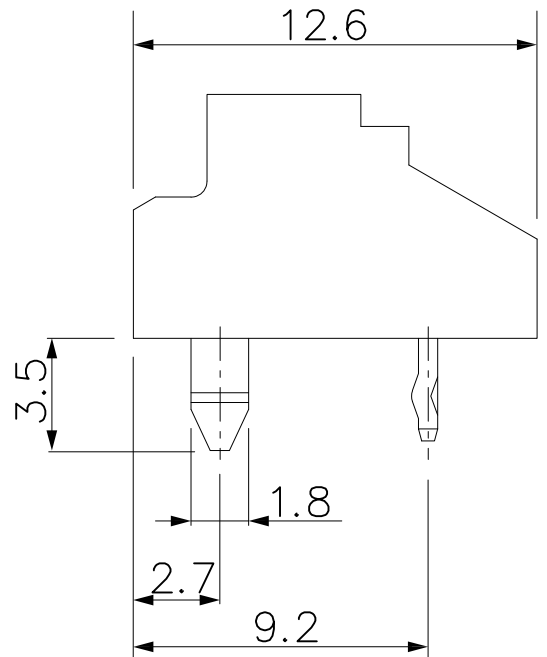
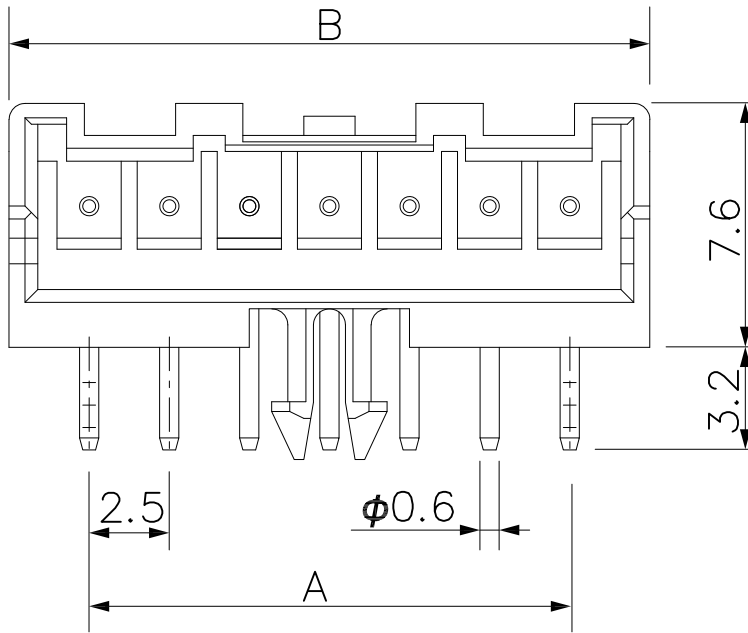


仅供参考

REV.	REVISION RECORD	DATE
A0	新图面发行	2017.06.16

主要技术参数 Main Specifications

线数 (Poles): 02~14
 接触电阻 (Contact resistance): $\leq 20m\Omega$
 绝缘电阻 (Insulation resistance): $\geq 1000M\Omega$
 额定电压 (Rated voltage): 250V AC DC
 额定电流 (Rated current): 3.0A AC DC
 耐电压 (Withstand Voltage): 1000V AC/minute
 温度范围 (Temperature Range): $-25^{\circ}C \sim +85^{\circ}C$



Poles	Dimensions (mm)		
	A	B	D
2	2.5	7.5	1.25
3	5.0	10.0	2.50
4	7.5	12.5	3.75
5	10.0	15.0	5.00
6	12.5	17.5	6.25
7	15.0	20.0	7.50
8	17.5	22.5	8.75
9	20.0	25.0	10.00
10	22.5	27.5	11.25
11	25.0	30.0	12.50
12	27.5	32.5	13.75
13	30.0	35.0	15.00
14	32.5	37.5	16.25

B	CONTACT	2~15 PCS	Copper Alloy	Tin-plated
A	PEDESTAL	1 PCS	PA66	COLOR: Natural (ivory)
ITFM	COMPONENT	Q'TY	MATERIAL	FINISH

	GENERAL TOLERANCES		SCALE: 1:1	NAME	DATE	深圳市思拓展电子有限公司 SHENZHEN SINOTOP ELECTRONICS CO., LTD 公司网址: www.szstuo.cn 公司电话: 0755-23765350 邮 箱: 2850175982@qq.com 公司传真: 0755-23765341	PART. NO: ST-WF-250-006AW
	LINEAR	ANGLES	APPROVED				DWG. NO:
UNIT: MM	0.0±0.30	X° REF±6°	DESIGNER			TITLE: 2.50mmPITCH 90° WAFER DIP TYPE	REV: A0 SHEET: 1/1
SIZE: A4	0.000±0.10	X° X'±2°	DRAWN	肖坤权	2017.06.16		