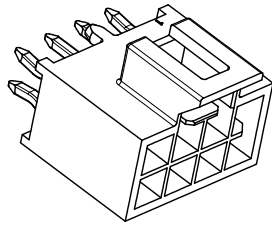
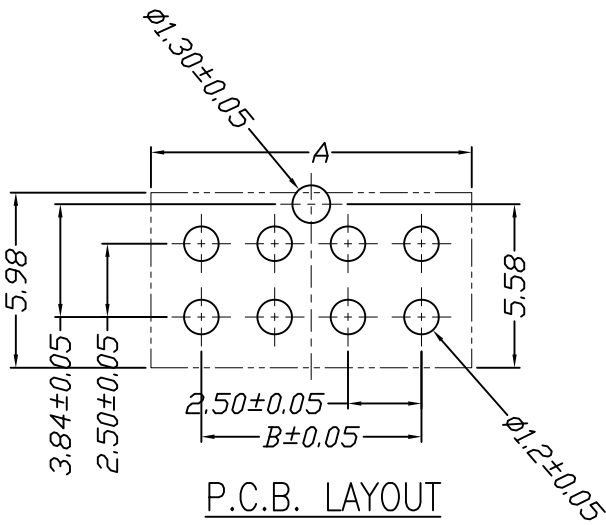
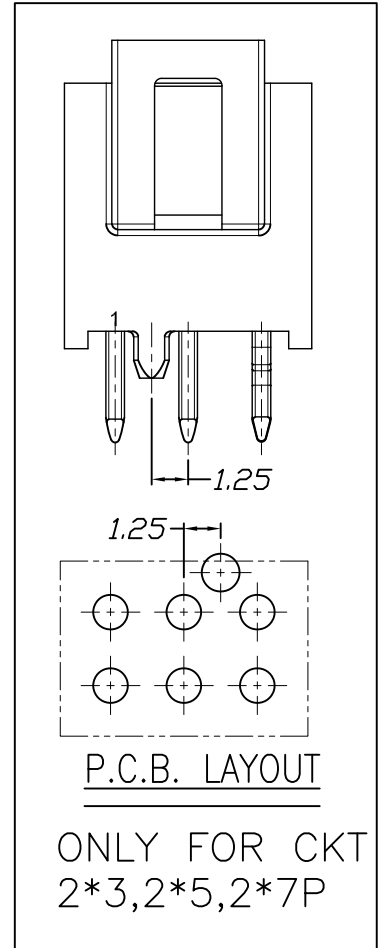
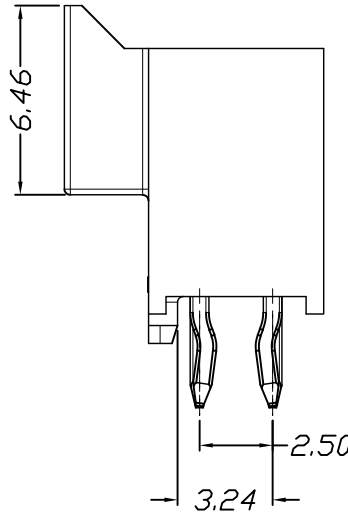
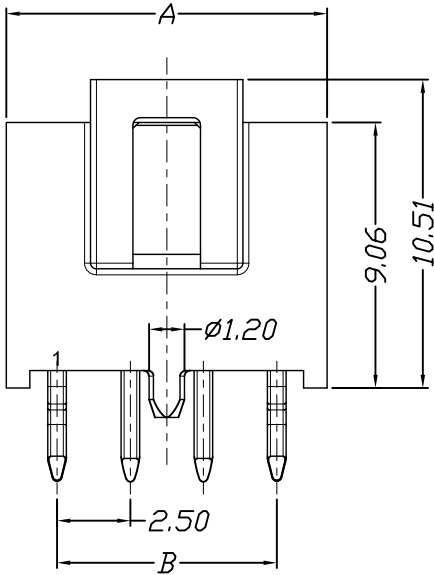
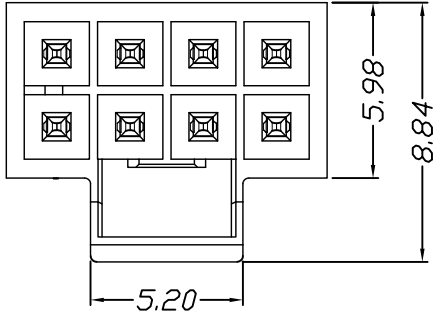


仅供参考

REV.	REVISION RECORD	DATE
A0	新图面发行	2017.06.16



Specifications:
 Voltage Rating : 250V AC/DC
 Current Rating : 3A AC,DC
 Withstand Voltage : 1500V AC/minute
 Contact Resistance : 40mΩ(MAX.)
 Insulation Resistance : 1000MΩ(MIN.)
 Temperature Range : -40°C~+105°C



Poles	Dimensions	
	A	B
2*2P	5.94	2.50
2*3P	8.44	5.00
2*4P	10.94	7.50
2*5P	13.44	10.00
2*6P	15.94	12.50
2*7P	18.44	15.00
2*8P	20.94	17.50

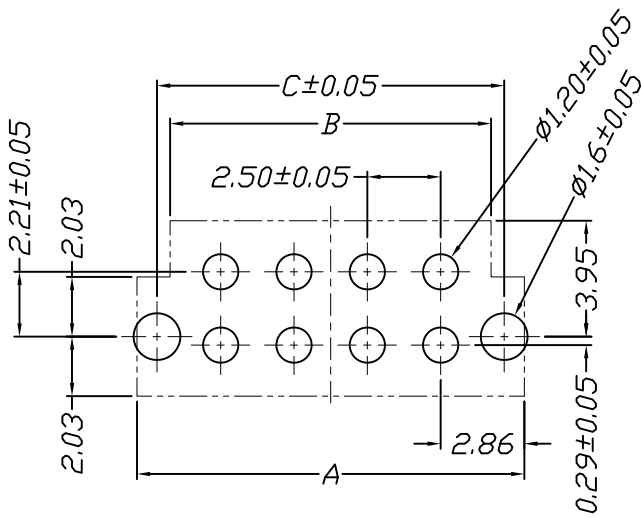
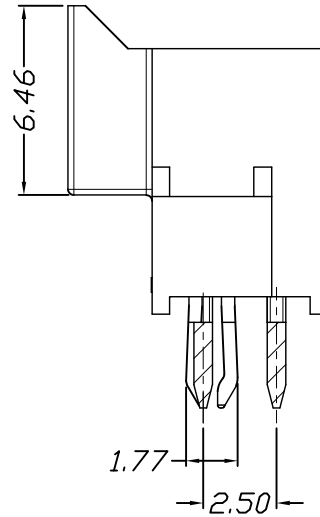
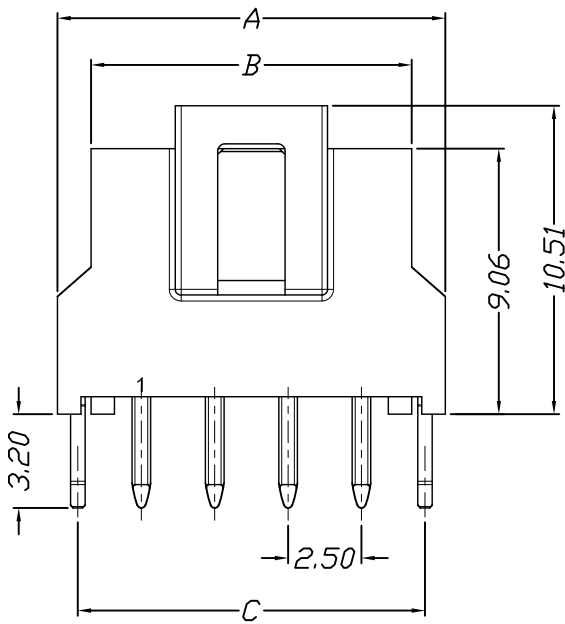
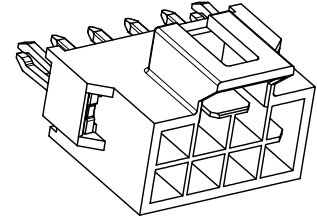
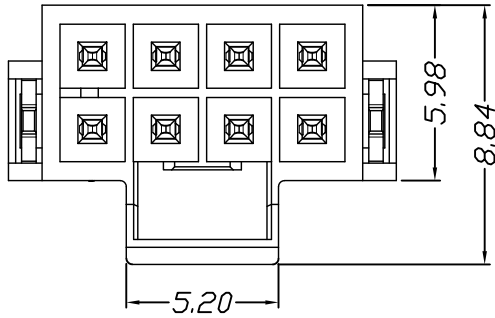
Material	Color	PIN Material
LCP	Black	Brass

	GENERAL TOLERANCES		SCALE: 1:1	NAME	DATE	深圳市思拓展电子有限公司 SHENZHEN SINOTOP ELECTRONICS CO., LTD 公司网址: www.szstuo.cn 公司电话: 0755-23765350 邮箱: 2850175982@qq.com 公司传真: 0755-23765341	PART. NO: STP42508W00-2XNPX-A1-XX
	LINEAR	ANGLES					
UNIT: MM	0.00±0.25	X° ±3°	DESIGNER			TITLE:	DWG. NO:
SIZE: A4	0.000±0.15	X° X'±2°	DRAWN	肖坤权	2017.06.16	2.50mm Pitch 180° Wafer DIP Type	REV: A0 SHEET: 1/1

仅供参考

REV.	REVISION RECORD	DATE
A0	新图面发行	2017.06.16

Specifications:
 Voltage Rating : 250V AC/DC
 Current Rating : 3A AC,DC
 Withstand Voltage : 1500V AC/minute
 Contact Resistance : 40mΩ(MAX.)
 Insulation Resistance : 1000MΩ(MIN.)
 Temperature Range : -40°C~+105°C



P.C.B. LAYOUT

Poles	Dimensions		
	A	B	C
2*2P	8.22	5.94	6.84
2*3P	10.72	8.44	9.34
2*4P	13.22	10.94	11.84
2*5P	15.72	13.44	14.34
2*6P	18.22	15.94	16.84
2*7P	20.72	18.44	19.34
2*8P	23.22	20.94	21.84

Material	Color	PIN Material
LCP	Black	Brass

	GENERAL TOLERANCES		SCALE: 1:1	NAME	DATE
	LINEAR	ANGLES			
	0.0±0.35	X° REF±6°	APPROVED		
UNIT: MM	0.00±0.25	X° ±3°	DESIGNER		
SIZE: A4	0.000±0.15	X° X'±2°	DRAWN	肖坤权	2017.06.16

深圳市思拓展电子有限公司
 SHENZHEN SINOTOP ELECTRONICS CO., LTD
 公司网址: www.szsituo.cn 公司电话: 0755-23765350
 邮箱: 2850175982@qq.com 公司传真: 0755-23765341

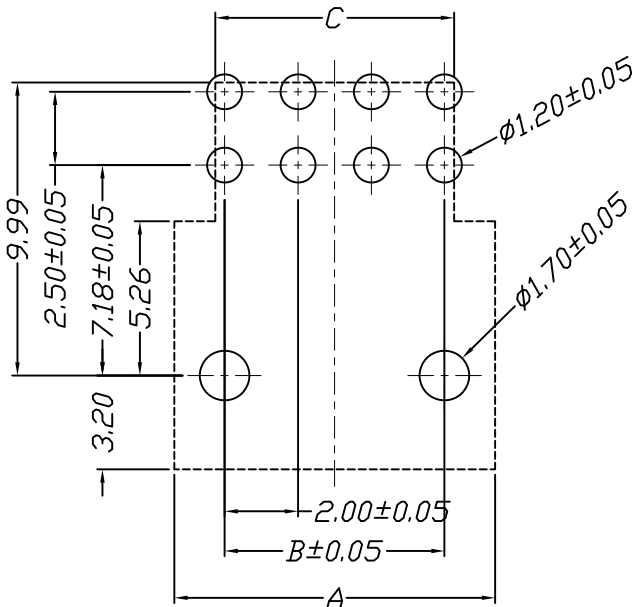
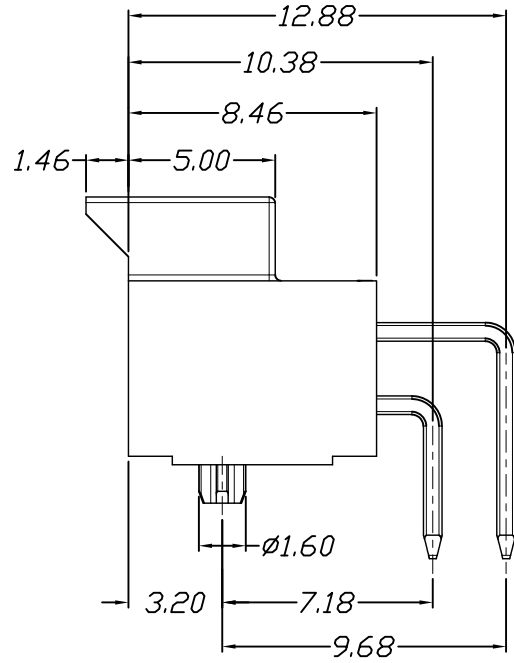
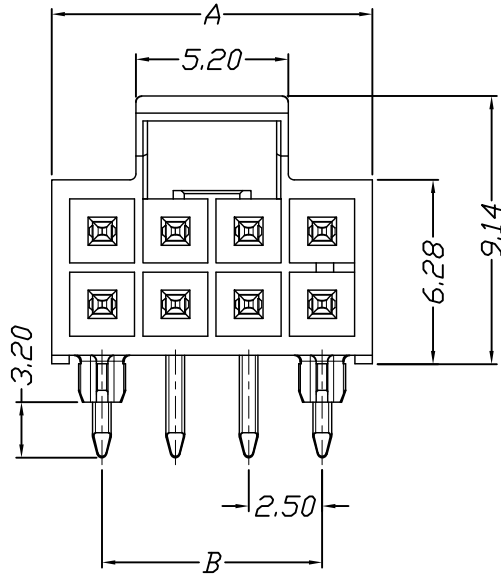
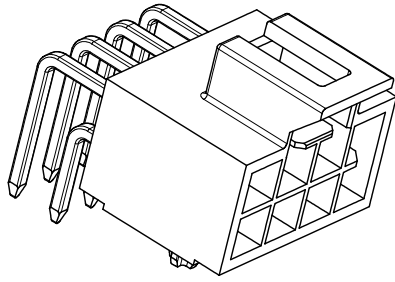
TITLE:
2.50mm Pitch 180° Wafer DIP Type

PART. NO:	STP42508W00-2XNPX-B2-XX
DWG. NO:	
REV:	A0
SHEET:	1/1

仅供参考

REV.	REVISION RECORD	DATE
A0	新图面发行	2017.06.16

Specifications:
 Voltage Rating : 250V AC/DC
 Current Rating : 3A AC,DC
 Withstand Voltage : 1500V AC/minute
 Contact Resistance : 40mΩ(MAX.)
 Insulation Resistance : 1000MΩ(MIN.)
 Temperature Range : -40°C~+105°C



P.C.B. LAYOUT

Poles	Dimensions		
	A	B	C
2*2P	5.94	2.50	3.14
2*3P	8.44	5.00	5.64
2*4P	10.94	7.50	8.14
2*5P	13.44	10.00	10.64
2*6P	15.94	12.50	13.14
2*7P	18.44	15.00	15.64
2*8P	20.94	17.50	18.14

Material	Color	PIN Material
LCP	Black	Brass

	GENERAL TOLERANCES		SCALE: 1:1	NAME	DATE
	LINEAR	ANGLES			
	0.0±0.35	X° REF±6°	APPROVED		
UNIT: MM	0.00±0.25	X° ±3°	DESIGNER		
SIZE: A4	0.000±0.15	X° X'±2°	DRAWN	肖坤权	2017.06.16

深圳市思拓展电子有限公司
 SHENZHEN SINOTOP ELECTRONICS CO., LTD
 公司地址: WWW.SZSITUAO.CN 公司电话: 0755-23765350
 邮箱: 2850175982@qq.com 公司传真: 0755-23765341

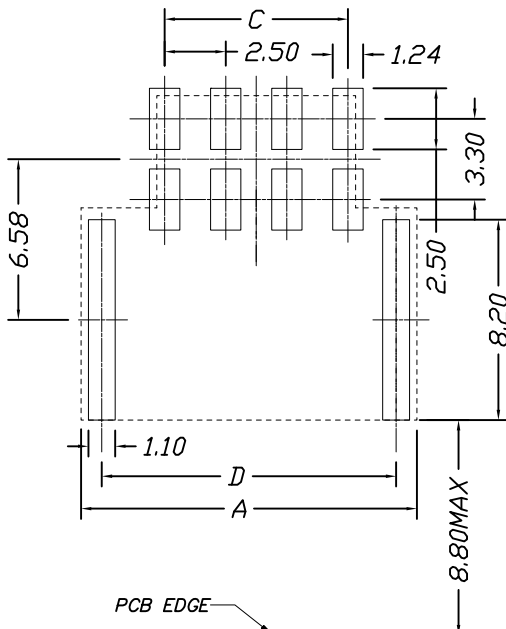
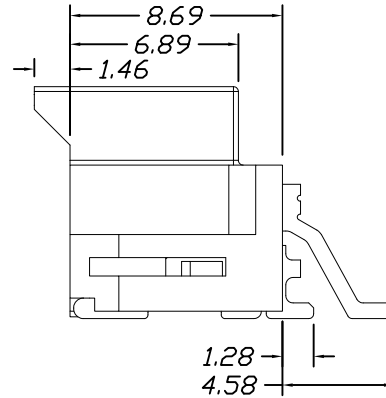
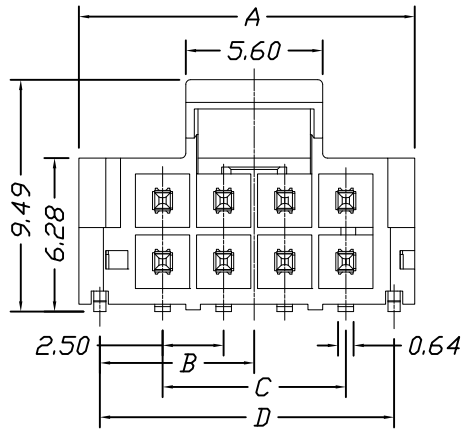
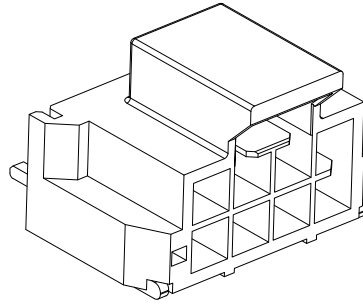
PART NO:	STP42508W90-2XNPX-A1-XX
DWG NO:	
REV:	A0
SHEET:	1/1

TITLE:
2.50mm Pitch 90° Wafer DIP Type

仅供参考

REV.	REVISION RECORD	DATE
A0	新图面发行	2017.06.16

Specifications:
 Voltage Rating : 250V AC/DC
 Current Rating : 3A AC,DC
 Withstand Voltage : 1500V AC/minute
 Contact Resistance : 40mΩ(MAX.)
 Insulation Resistance : 1000MΩ(MIN.)
 Temperature Range : -40°C~+105°C



RECOMMENDED PCB LAYOUT (CONNECTOR SIDE VIEW)
 THICKNESS=1.6mm MIN. TOLERANCE: 0.05
 RECOMMENDED STENCIL THICKNESS=0.2MM.

Poles	Dimensions			
	A	B	C	D
4P	8.74	3.82	2.50	7.04
6P	11.24	5.07	5.00	9.54
8P	13.74	6.32	7.50	12.04
10P	16.24	7.57	10.00	14.54
12P	18.74	8.82	12.50	17.04
14P	21.24	10.07	15.00	19.54
16P	23.74	11.32	17.50	22.04

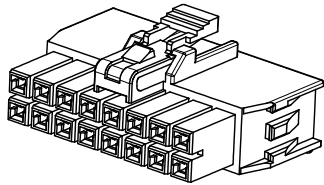
Material	Color	PIN Material
LCP	Black	Brass

	GENERAL TOLERANCES		SCALE: 1:1	NAME	DATE	深圳市思拓展电子有限公司 SHENZHEN SINOTOP ELECTRONICS CO., LTD 公司地址: WWW.SZSITUAO.CN 公司电话: 0755-23765350 邮箱: 2850175982@qq.com 公司传真: 0755-23765341	PART. NO:
	LINEAR	ANGLES	APPROVED				STP42508W90-2XNPX-A2-XX
	0.0±0.35	X° REF±6°	DESIGNER				DWG. NO:
	UNIT: MM	0.00±0.25	X° ±3°	DRAWN	肖坤权		2017.06.16
SIZE: A4	0.000±0.15	X° X'±2°				TITLE:	SHEET: 1/1
			2.50mm Pitch 90° Wafer SMT Type				

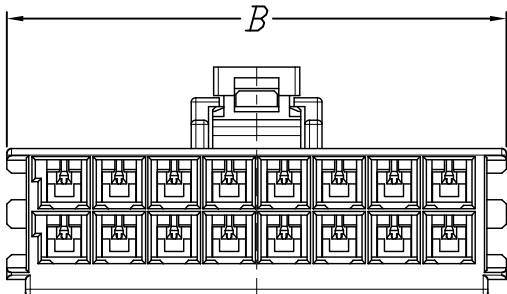
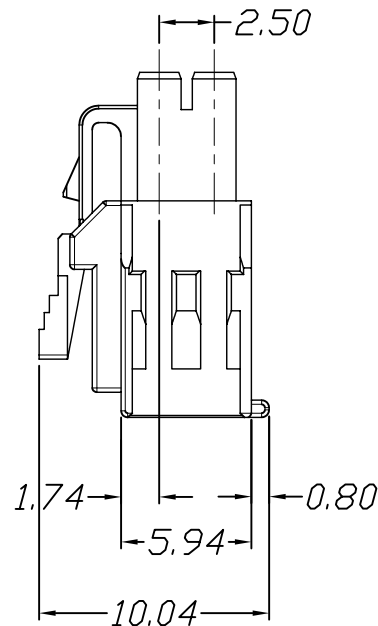
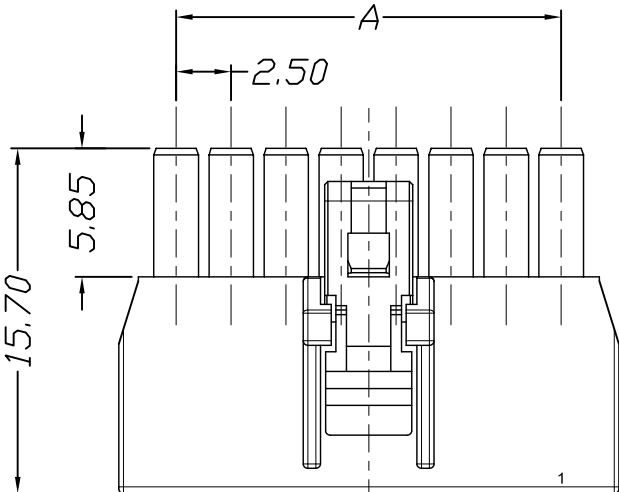
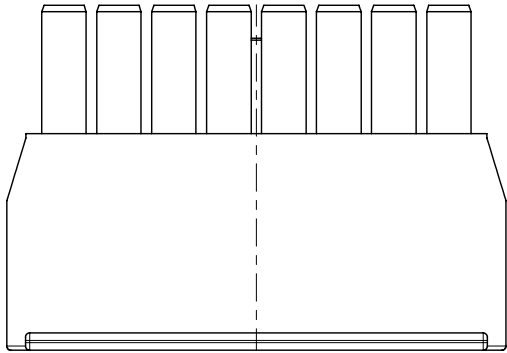
A B C D E F G H

仅供参考

REV.	REVISION RECORD	DATE
A0	新图面发行	2017.06.16



Specifications:
 Voltage Rating : 250V AC/DC
 Current Rating : 3A AC,DC
 Withstand Voltage : 1500V AC/minute
 Contact Resistance : 40mΩ(MAX.)
 Insulation Resistance : 1000MΩ(MIN.)
 Temperature Range : -40°C~+105°C



Poles	Dimensions	
	A	B
2*2P	2.50	7.70
2*3P	5.00	10.20
2*4P	7.50	12.70
2*5P	10.00	15.20
2*6P	12.50	17.70
2*7P	15.00	20.20
2*8P	17.50	22.70

Material	Color
PBT UL94V-0	BLACK

	GENERAL TOLERANCES		SCALE: 1:1	NAME	DATE
	LINEAR	ANGLES			
	0.0±0.35	X° REF±6°	APPROVED		
UNIT: MM	0.00±0.25	X° ±3°	DESIGNER		
SIZE: A4	0.000±0.15	X° X'±2°	DRAWN	肖坤权	2017.06.16

深圳市思拓展电子有限公司
 SHENZHEN SINOTOP ELECTRONICS CO., LTD
 公司网址: www.szstuo.cn 公司电话: 0755-23765350
 邮 箱: 2850175982@qq.com 公司传真: 0755-23765341

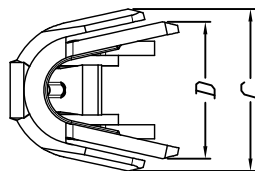
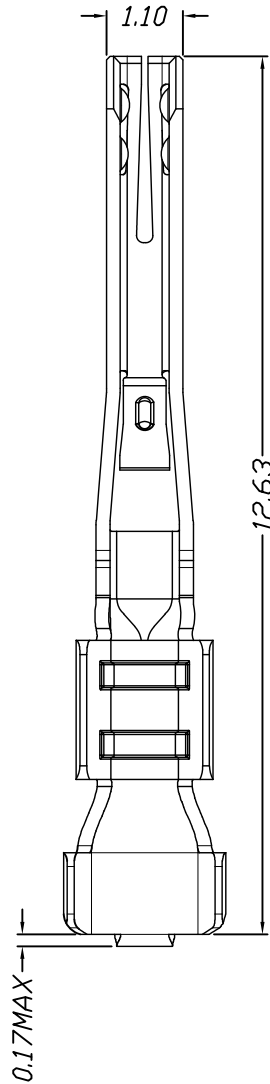
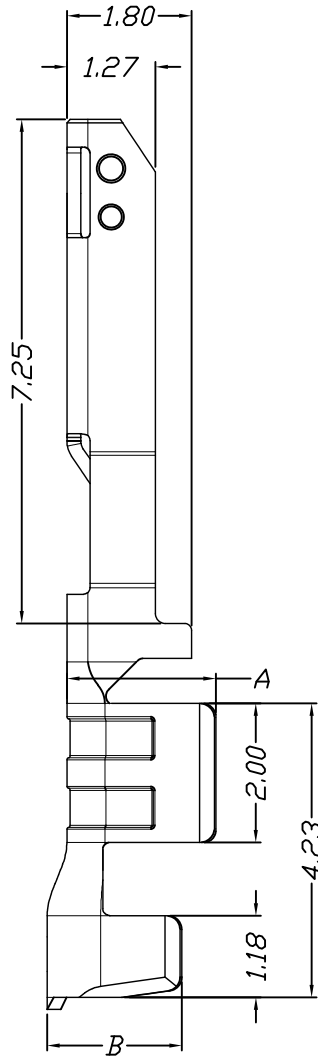
TITLE:
 2.50mm PITCH Housing

PART NO:	STP42508H00-2XNPX-X-PT	
DWG NO:		
REV:	A0	SHEET: 1/1

仅供参考

REV.	REVISION RECORD	DATE
A0	新图面发行	2017.06.16

Specifications:
 Voltage Rating : 250V AC/DC
 Current Rating : 3A AC,DC
 Withstand Voltage : 1500V AC/minute
 Contact Resistance : 40mΩ(MAX.)
 Insulation Resistance : 1000MΩ(MIN.)
 Temperature Range : -40°C~+105°C



Part No.	Dimensions			
	A	B	C	D
STP42508TOP-**	2.14	1.94	2.33	1.97
STP42508TIP-**	1.45	2.00	2.12	1.39

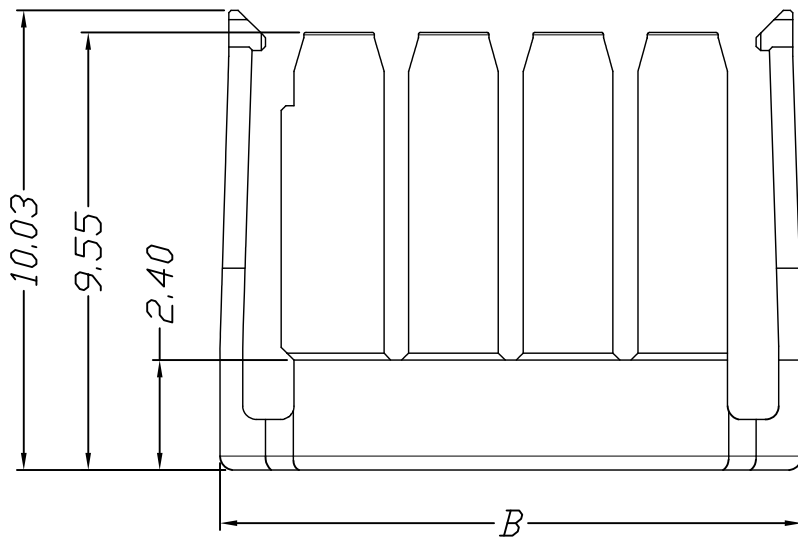
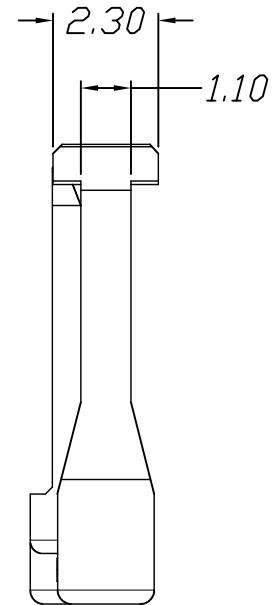
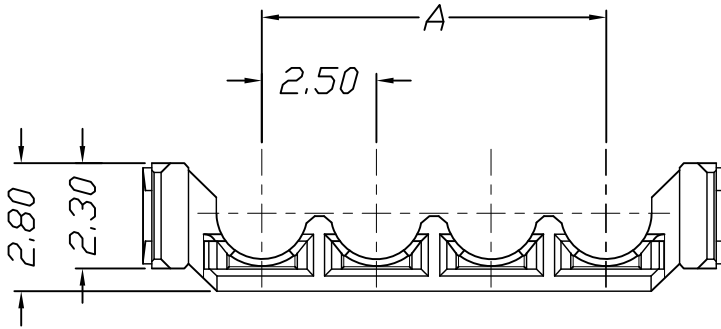
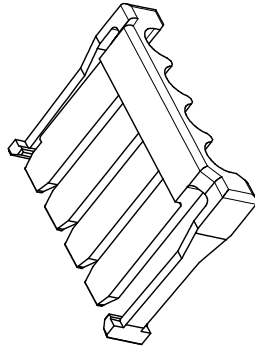
Part No	Wire Range	Insulation O.D.	Material	Finish	Qty/Reel
STP42508TOP-**	AWG#22~#20	1.50mm (Max)	Phosphor bronze	Au or Sn	
STP42508TIP-**	AWG#24~#26				

	GENERAL TOLERANCES		SCALE: 1:1	NAME	DATE	深圳市思拓展电子有限公司 SHENZHEN SINOTOP ELECTRONICS CO., LTD 公司网址: www.szstuo.cn 公司电话: 0755-23765350 邮箱: 2850175982@qq.com 公司传真: 0755-23765341	PART. NO: STP42508T*P-XX	
	LINEAR	ANGLES	APPROVED				DWG. NO:	
	0.0±0.35	X° REF±6°	DESIGNER				TITLE: 2.50mm PITCH Crimp Terminal	REV: A0 SHEET: 1/1
	UNIT: MM	0.00±0.25	X° ±3°	DRAWN	肖坤权		2017.06.16	
SIZE: A4	0.000±0.15	X° X'±2°						

仅供参考

REV.	REVISION RECORD	DATE
A0	新图面发行	2017.06.16

Specifications:
 Voltage Rating : 250V AC/DC
 Current Rating : 3A AC,DC
 Withstand Voltage : 1500V AC/minute
 Contact Resistance : 40mΩ(MAX.)
 Insulation Resistance : 1000MΩ(MIN.)
 Temperature Range : -40°C~+105°C



Poles	Dimensions	
	A	B
2P	2.50	7.70
3P	5.00	10.20
4P	7.50	12.70
5P	10.00	15.20
6P	12.50	17.70
7P	15.00	20.20
8P	17.50	22.70

Material	Color
PA66 UL94V-0	BLACK

	GENERAL TOLERANCES		SCALE: 1:1	NAME	DATE	深圳市思拓展电子有限公司 SHENZHEN SINOTOP ELECTRONICS CO., LTD 公司网址: www.szstuo.cn 公司电话: 0755-23765350 销售热线: 2850175982@qq.com 公司传真: 0755-23765341	PART. NO: STP42508R00-NPX-66
	LINEAR	ANGLES					
UNIT: MM	0.00±0.25	X° ±3°	DESIGNER			TITLE:	DWG. NO:
SIZE: A4	0.000±0.15	X° X' ±2°	DRAWN	肖坤权	2017.06.16	2.50mm PITCH Retainer	REV: A0 SHEET: 1/1